

# FACT SHEET

## Candler Road ART

### Winter 2024



### WHAT IS ARTERIAL RAPID TRANSIT?

Arterial Rapid Transit (ART) is a new type of transit service in the Atlanta Region. ART will create a network of fast, frequent, and reliable routes on existing high ridership corridors. ART bus service typically operates in mixed traffic with other vehicles and is characterized by short wait times, traffic signal priority, queue jump lanes, and enhanced amenities.



### HOW DOES ART DIFFER FROM THE CURRENT LOCAL SERVICE?

ART uses technology to improve travel time and reliability. By equipping buses and traffic signals with transponders, the vehicles will get priority which reduces delay time at traffic signals. This, combined with consolidation of stops, allows the bus to provide a more efficient transit experience.



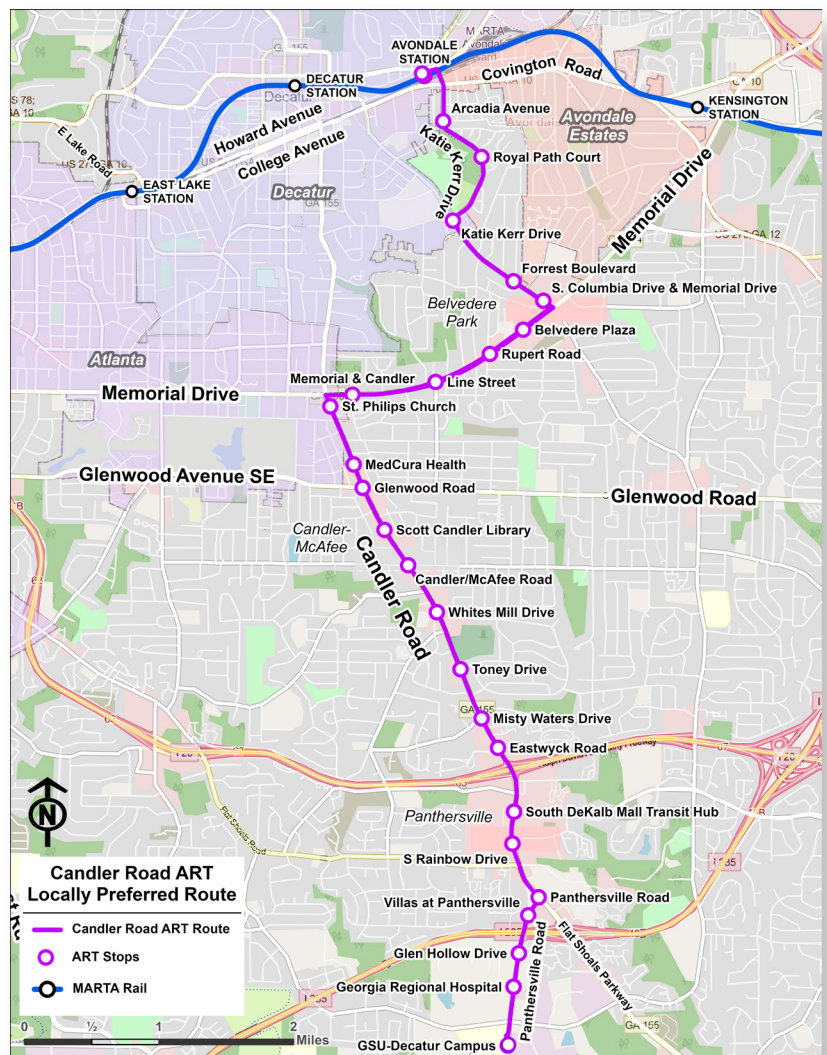
### ABOUT CANDLER ROAD ARTERIAL RAPID TRANSIT (ART)

The Candler Road ART project is an implementation of DeKalb County's goals that were established in the 2019 DeKalb Transit Master Plan. The DeKalb Transit Master Plan addressed mobility challenges, enhancements of future development opportunities, and the necessity for quality-of-life improvements within each region of DeKalb County. In the Plan, Candler Road ART was identified as a potential transit improvement within DeKalb County.



### ART ROUTE

Candler Road is a vital regional transportation corridor connecting south DeKalb County to the cities of Atlanta and Decatur, and the MARTA rail system. The ART route will provide enhanced transit service in this area, beginning at GSU-Decatur Campus in the south, and serving Panthersville Road, Memorial Drive, South Columbia Drive and Katie Kerr Drive, before terminating at Avondale Rail Station.



# FACT SHEET

## Candler Road ART

### Winter 2024

#### BENEFITS OF ART

-  All-door boarding
-  Reduces travel time
-  Improves traffic safety
-  Increases transit reliability
-  Increased capacity (up to 250 riders per hour)
-  Creates faster connections
-  Reduces Greenhouse Gas (GHG) and local air pollutant emissions

#### HOW LONG WILL THE PROJECT TAKE TO COMPLETE?

MARTA is currently:

- Developing concept designs for ART stations and amenities
- Creating preliminary designs of stop locations, including the southern terminus at the GSU-Decatur campus
- Identifying other projects that impact or enhance the ART project
- Communicating with the community and local leadership with updates of project progress

**Anticipated Project Completion**  
**December 2026**






#### HOW TO GET INVOLVED

MARTA is seeking public input throughout the project to ensure the corridor meets the community's current and future needs.

To request information in another language or in an accessible format, call 404-848-4037 (Voice) / 404-848-5665 (TTY).

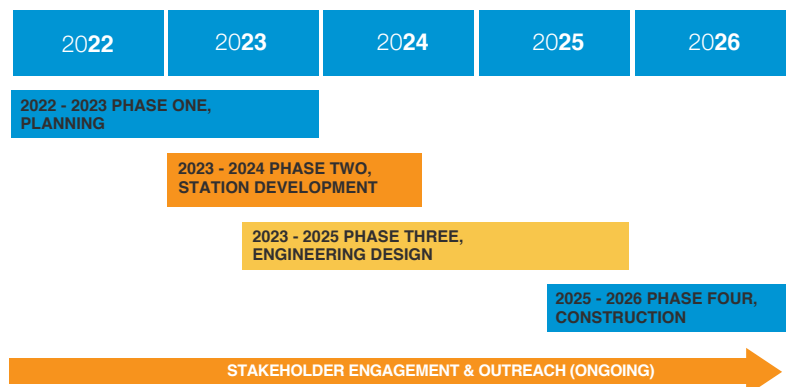
For more information about the Candler Road ART, please visit <https://www.itsmarta.com/candlerART.aspx>.

#### AMENITIES BEING CONSIDERED FOR ART STATIONS

-  Seating
-  Real-time digital signage
-  Station placement near safe pedestrian crossings
-  Security cameras
-  Bicycle racks

#### PROJECT SCHEDULE

The project initiated in April 2022 and will continue through December 2026.



CONTACT:

**Andrew Pofahl**  
Project Manager, Office of Local  
Corridors & Hubs

EMAIL:

**[candler@itsmarta.com](mailto:candler@itsmarta.com)**  
Phone: 404-848-4099